

FT4 SCOPE OF SUPPLY

- Pratt & Whitney Dual Fuel FT-4 / Turbine Gen/Set
- Baseplate with supports for Gas Turbine, & Foundation Bolts
- Main Generator 13.8/11kv 60/50hz .85 P.F.
- PLC Turbine Controls
- Complete Local/Remote Control and Supervisory System for the Gas Turbine and Expander, including all necessary control switches and alarms
- The Generating Plant is Auto : Start, Synch & Parallel
- Water Injection for Power Boost & Exhaust Emissions Control
- Exhaust Silencer
- Exhaust Stack
- Intake Silencer /Screen
- Coupling between the Turbine and the Generator.
- Generator
- Generator is a Self Ventilated Turbo and designed for Open Air Cooling.
- Exciter is located at the Non-Driven End of the Generator.
- Inlet Suction Duct for the Gas Turbine
- Thermal and Acoustical Insulation

Governing And Lubricating Oil System

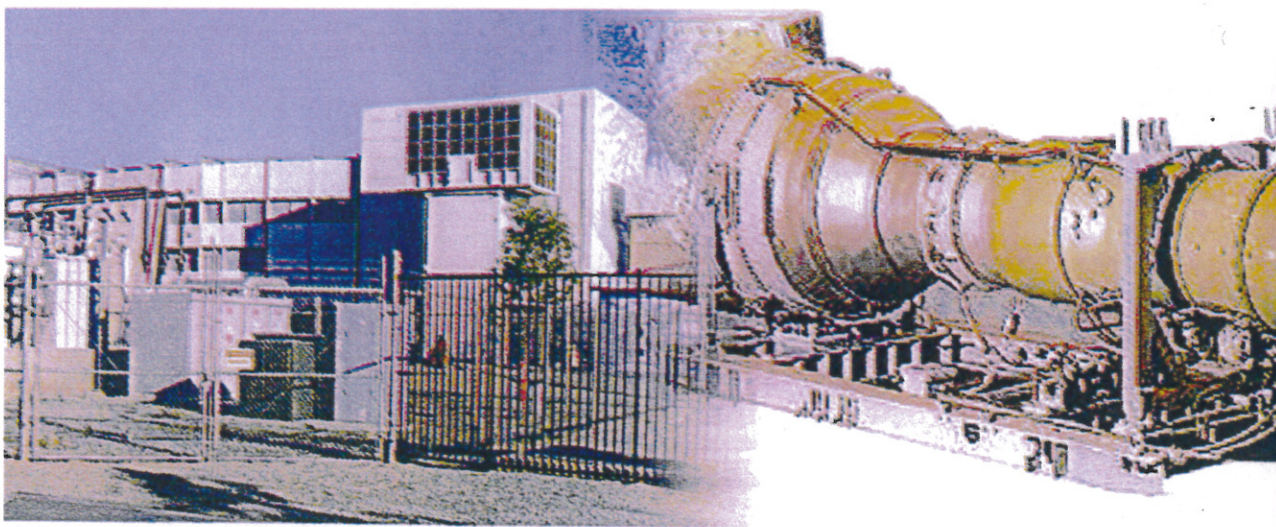
- Turbine comes with an Integral Governing and Lubricating Oil System which includes all necessary safety and supervisory devices.
- Generator has a separate lubricating system as well as the Load Governor and Over Speed Trip Mechanism.
- Oil is cooled by a radiator located at the side of the unit.
- Fan Cooled Radiator.
- DC Battery is supplied to provide power in case of an emergency and unit power is lost

Fuel System:

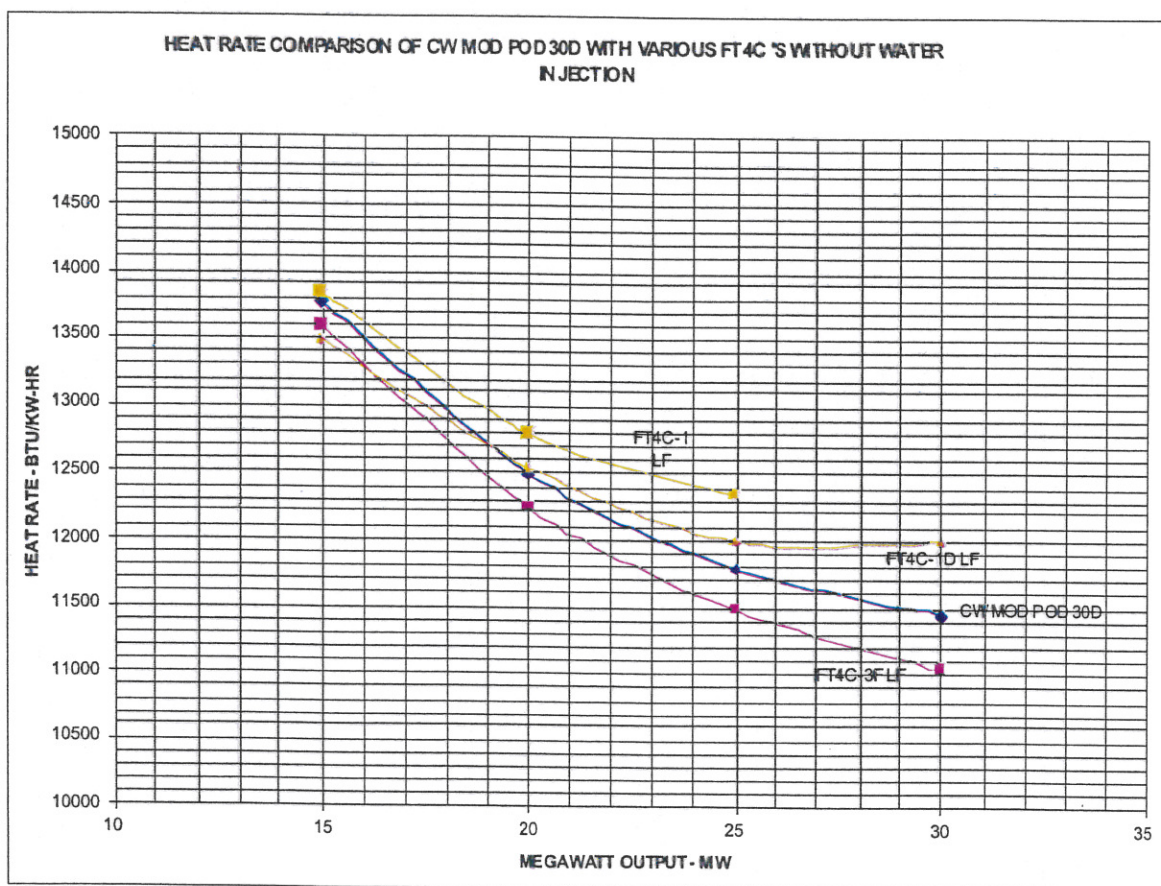
- Liquid Fuel/Gas Fuel
- Fuel Connections are located at the side of the unit

Vibration Supervisory System

- Noise Level: the noise level measured at 400 Ft will be 85db or lower



FT4 FACT SHEET



Turbine (Simple Cycle)

Generator Frequency	50 Hz	60 Hz
Generator Effy. Assumed / Gearbox Effy. Assumed	.980 / N/A	.980 / N/A
Output (kW)	24,300	29,400
Heat Rate (Btu/kWe-hr)	13,200	11,500
Power Turbine Speed (rpm)	3,600	3,600
Exhaust Temp. (deg. F)	570	690